



ECO FLIGHT

YEAR END REPORT 2022

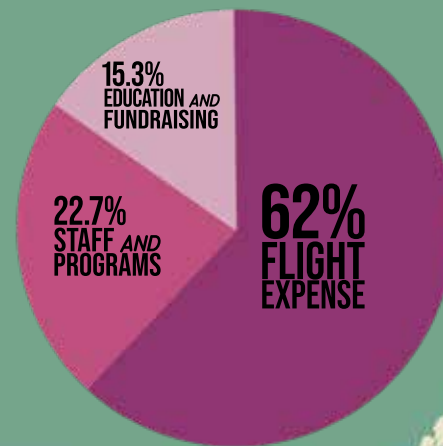


OUR MISSION: EcoFlight educates and advocates for the protection of remaining wild lands and wildlife habitat using small aircraft. The aerial perspective and our educational programs encourage an environmental stewardship ethic among citizens of all ages.



101 PLACE-BASED
CONSERVATION
ISSUES

**2022
BUDGET**



720



PASSENGERS

171
**STRATEGIC
OVERFLIGHTS**

(140+ EARNED MEDIA PIECES)

407
PARTNERS
(THANK YOU!)

345
FLIGHT HOURS



FROM THE EXECUTIVE DIRECTOR

We are honored to have been Your Eyes in the Sky for the last 20 years!

EcoFlight's brand of Conservation Aviation has served as a powerful and unique platform to educate and advocate for the environment. Our 20th Anniversary Year End Report shows how each of our overflights opens eyes to change: water in the West evaporating in real time - both natural and manmade bodies of water disappearing, mega-fires burning through our forests and grasslands, and

the ecological consequences of an urgent need to mine lithium and cobalt to fuel our 21st century style of life.

Our unique aerial perspective brings these stories to life in a way that is without equal from the ground. Cockpit conversations and the shared experience of flight transcend barriers, and give us so many reasons to be optimistic despite the threats that face our environment. EcoFlight is a stalwart partner to over 400 organizations, working together to meet these challenges.

We are looking forward to the next 20 years, as we undertake new methodology in outreach and communication, and increase our effectiveness for social justice as we reach and help diverse communities throughout the West.

Protection of our precious fresh water, our wildlands, our wildlife and our communities are at the core of EcoFlight's raison d'être, and these issues will remain at the forefront of our work as we continue flying into the future.

Best,
Jane Pargiter





A NOTE FROM ECOFLIGHT BOARD MEMBER DEON BEN



For the past three years we have had our society structures stirred, and during these trying times many of us reflected on our social structures and dynamics. Some took this opportunity to relearn the basic social structures in our workplace and our social circles. In the non-profit sector, organizations, including EcoFlight, started to re-evaluate their work, partners, and goals. For the years I've served on EcoFlight's board, I have experienced an increase in diversity, equity, and social justice awareness.



When our society talks about Justice, Diversity, Equity, and Inclusion (JEDI), it isn't always an easy conversation, but the key is to begin. At times it is very uncomfortable, anxiety rises, and questions of oneself are always present. But, an organization taking on JEDI will create opportunities for growth with their partners. I am very happy to hear EcoFlight staff are participating in the local Equity Action Project cohort, and the Western Conservation Communications cohort with anti-racism, bias, and equity themed directions. I fully support EcoFlight's internal JEDI work, and their efforts to promote JEDI throughout the field of conservation. I believe incorporating JEDI principles into EcoFlight's structure is strengthening the organization and strengthening strong relationships with their partners locally and regionally.





EMIGRANT GOLD MINE HALTED, NEW PUBLIC LAND OPENED

75 backcountry acres in Montana's Paradise Valley are now protected public lands. This was almost the site of a massive open-pit gold mine. Overflights provided a key platform for collaboration between stakeholders, which helped spur a unique collaborative agreement that was a win for the property owner and the ecosystem. Our partner, Greater Yellowstone Coalition, purchased the 75 acres, and the land is now part of the Custer Gallatin National Forest.

UNAWEEP'S CONTROVERSIAL HYDROELECTRIC PROPOSAL

Unaweep Canyon, a Ute name meaning 'the canyon with two mouths', is the only canyon in the world that has two rivers flowing out in opposite directions. A controversial hydroelectric project was proposed here, touted as a step toward decarbonization, but residents, user groups, and river experts say minimal energy benefits did not outweigh negative impacts. Flights showed how reservoirs, roads, pipelines, and power lines will cause damage to the local ecosystem, and recreational area. In a major victory announced in November 2022, Xcel Energy decided to withdraw its proposal, and not develop this unique and beloved canyon!

A WIN-WIN IN MONTANA

Montana now has the Big Snowy Mountains Wildlife Management Area. We flew this native mountain/foothill and prairie grassland habitat area over the last few years with MWF, Rocky Mtn Elk Foundation and Backcountry Hunters & Anglers - and are excited the Big Snowy's elk herd, black bear, mule deer and pronghorn habitat is now protected from surrounding grazing and ranching.





MINERAL WITHDRAWAL FOR THOMPSON DIVIDE

The Thompson Divide is one step closer to permanent protection! The Biden Administration has kicked off an administrative withdrawal process that would prevent any mineral leasing for 20 years while permanent protections are secured for this gem of Colorado's backcountry. The Thompson Divide provides popular public land access and critical habitat for big game, and drives a sustainable agricultural and recreation-based economy that is vital to the local communities' wellbeing.

COLORADO'S NEWEST NATIONAL MONUMENT

Over 53,000 acres of Colorado's high country are now permanently protected for future generations under the Camp Hale-Continental Divide National Monument! Applauded by veterans, Ute Mountain Ute and Southern Ute Tribal members, EcoFlight, and a broad coalition of residents and recreationists, the Monument honors the 10th Mountain Division veterans who trained here during WWII.





ENVIRONMENTAL JUSTICE

ENVIRONMENTAL JUSTICE AT WHITE MESA

The saga continues. EcoFlight has been reporting environmental violations at the White Mesa uranium mill near Blanding, UT, since August 2021. Waste holding ponds here are supposed to be covered with liquid to prevent toxic particles from becoming airborne, but flights showed that one of the cells was largely dry. As a result of efforts by EcoFlight, Grand Canyon Trust and the Ute Mountain Ute, the EPA has ordered corrective action. However, Fall 2022 flights revealed that violations persist. Located near Bears Ears National Monument and the Ute Mountain Ute community of White Mesa, the environmental justice and ecological implications of these infractions are grim. We will continue to fly the Mill and advocate for justice and safety for the White Mesa community.



A FRAMEWORK FOR TRIBAL CO-MANAGEMENT

The five Tribes of the Bears Ears Inter-Tribal Coalition signed a precedent-setting agreement with the Forest Service and BLM, formalizing co-management of the monument between Nations. This agreement elevates Traditional Knowledge and Tribal sovereignty, and will help ensure that cultural sites and ecologically sensitive areas are carefully managed and protected. Building on over a decade of Bears Ears flights, we are honored to continue using the aerial perspective to build collaboration and understanding between diverse stakeholders.



WILDLIFE AND CONNECTIVITY

CHUCKWALLA - A PROPOSED NATIONAL MONUMENT

Hot, dry and unwelcoming at first look, the Chuckwalla Bench is actually a remarkably well-preserved and biologically-rich ecosystem, supporting threatened species like the desert tortoise and endemic Munz's Cholla (California's largest cactus!). It also hosts historic World War II training sites and countless areas sacred to Native peoples. However, Chuckwalla is threatened by residential expansion and energy development proposals. We flew 29 Palms Band of Mission Indians, Cactus to Cloud, California Wilderness Coalition, Colorado River Indian Tribes, Consejo de Federaciones Mexicanas, and Native American Land Conservancy over the proposed National Monument to build momentum for the campaign.

OUR NATION'S LARGEST WILDLIFE CROSSING

Earth Day 2022 was exciting to fly the breaking of ground of the Wallis Annenberg overpass, the largest wildlife crossing built to date, spanning 210 feet over the 10-lane 101 freeway just outside LA. The aerial perspective clearly shows the disconnected islands of habitat that will be reconnected by the crossing and how threatened species will now be able to reach new sources of food and new mates without the risk of serious wildlife collisions on the freeway.

L.A.'S LAST WILDLIFE CORRIDORS

Mountain lions still roam the Los Angeles hills. The Rim of the Valley expansion project would improve these large carnivores' ability to move freely between limited islands of wildlife habitat, and preserve an area with a rich natural and cultural heritage for future generations of Californians to enjoy. We flew Representative Mike Garcia, Santa Clarita's mayor, Latino Outdoors, California Audubon Society, and National Parks Conservation Association to demonstrate how precious and threatened LA's remaining habitat is.



RESERVOIRS AND DAM REMOVAL

KLAMATH RIVER DAM REMOVAL: SUPPORTING COLLABORATION BETWEEN TRIBES AND WATER MANAGERS

The Klamath dam removal will be the largest salmon restoration project and the largest dam removal project ever in the U.S.! Removing these obsolete dams will revive the iconic salmon without reducing water supply. We've flown this project for years and are thrilled the license to start the removal in 2023 has been transferred to our partner Klamath River Renewal Corporation, who we flew this year along with the Karuk and Yurok Tribes.

NEW LIFE FOR THE SNAKE RIVER

Momentum is growing for removal of the four lower Snake River dams. This feat would be one of the most ecologically beneficial restoration projects undertaken in the world, affecting salmon runs in the entire Columbia River Basin and benefitting Tribal communities that rely on salmon for spiritual practices, food, and economic benefit. We continue to fly scientists, press, wheat growers and transportation experts with our partners Idaho Conservation League, the Nez Perce Tribe, American Rivers and Trout Unlimited to generate good debate on climate change, diminishing hydroelectric capacity, and solutions to wheat transport in a dam removal scenario.

CANARY IN THE COAL MINE, OR ELEPHANT IN THE ROOM?

You've heard the news - Lake Powell is drying up. But the significance of the drought on this recreational playground of the Colorado River is impossible to visualize from the ground. The dwindling reservoir is a symptom of increasingly hot and dry conditions in the West. Everywhere across the West, less water is flowing downstream in rivers, while demand is only growing, especially for the Colorado River's overdrawn waters. Flights stimulate conversations around solutions to modern drought and river management.





SACRED LANDSCAPES

PROTECTING AVI KWA AME

Spirit Mountain, known as Avi Kwa Ame by the Fort Mojave Tribe, is designated Traditional Cultural Property on the National Register of Historic Places in recognition of its religious and cultural importance, but that title doesn't capture its importance. The entire area surrounding Spirit Mountain is considered sacred by nine Yuman speaking tribes as well as the Hopi and Chemehuevi Paiute. For the Yuman tribes, it is tied to their creation, cosmology, and well-being. The plane continues to provide an educational platform for advocates, policymakers, and Tribal members to help generate enthusiasm for a National Monument designation to protect this priceless landscape.



NOT FORESTS, NOT DESERTS — CHAPARRAL

Californians and visitors mostly rhapsodize about the grand Sierra Nevada mountains and Sequoia forests, but there is a subtle, shrub-dominated landscape in between known as Chaparral. The Mutt Kupshuw 'Éexil Kwáavichush proposed National Monument would protect 480,000 acres of this mid-elevation habitat, open opportunities for Tribal co-management of cultural landscapes, and generate sustainable local economic benefits through recreation and tourism. We provided the aerial perspective to inform this new campaign to the Volcan Mountain Association and Chaparral Lands Conservancy alongside staff from the offices of Sen. Padilla, Rep. Vargas, Congresswoman Jacobs, Rep. Peters, the Pauma Band of Luiseno Mission Indians, and the Hispanic Access Foundation.

BISON AND THE BLACKFEET TRIBE'S IINNII INITIATIVE

The rugged, spiritual landscape of the Chief Mountain region, sacred to the Blackfoot Tribe, transcends boundaries, from Glacier National Park, to the Blackfoot Reservation and Peace Park in Canada. Chief Mountain's use for ritual and ceremonial purposes goes back thousands of years. Today, Chief Mountain is the site of a historic bison reintroduction program, the Iinnii Initiative, led by the Blackfoot Confederacy. The Initiative holds great promise for restoring the spiritual and ecological integrity of the landscape and honoring Tribal rights and indigenous wisdom.



THE SACRED LITTLE COLORADO, THREATENED BY DAMS

Hydroelectric dam projects threaten the Little Colorado on Navajo Nation land, including Sipapuni, a place of emergence held in highest spiritual importance. The Big Canyon Dam project would destroy Sipapuni, sacred to the Hopi, and countless other places of sacred spiritual practice. We are honored to partner with the Little Colorado River's Tribes, including members of the Hopi and Navajo Nations, providing a platform for them to learn about the threats to this luminous turquoise river, iconic tributary to the Colorado.

20 YEARS

ANNIVERSARY



Bruce Gordon, EcoFlight's founder and chief pilot, and passengers.

2002



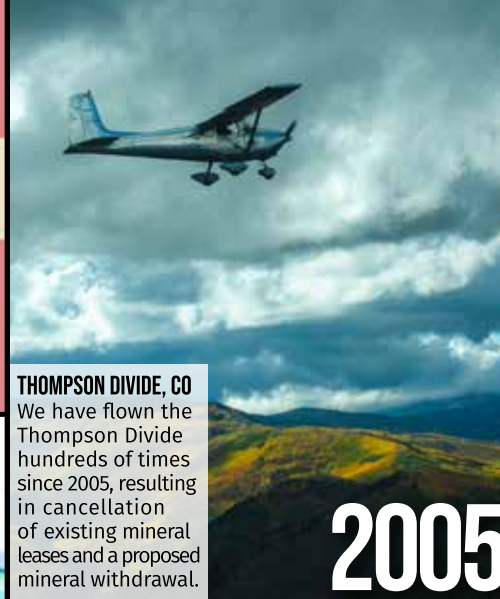
FACTORY BUTTE, UT
ORV use negatively impacts sensitive desert landscape but management policies remain contested.



2003

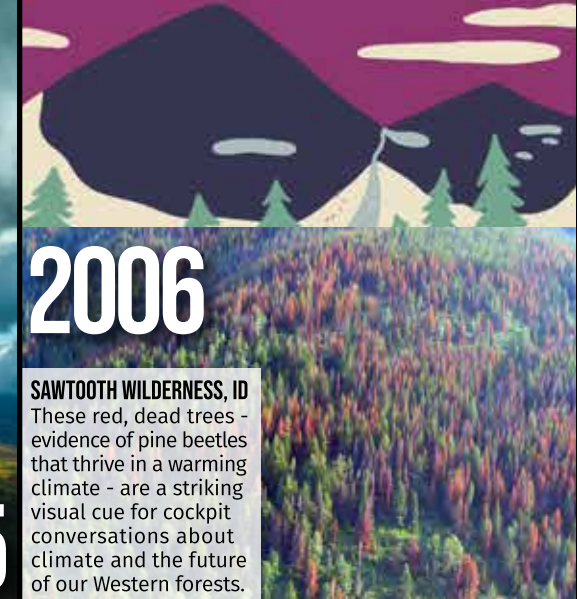


ROAN PLATEAU, CO
Natural gas use is prolific on the Roan Plateau. Flights helped achieve key protections in 2012 and 2016.



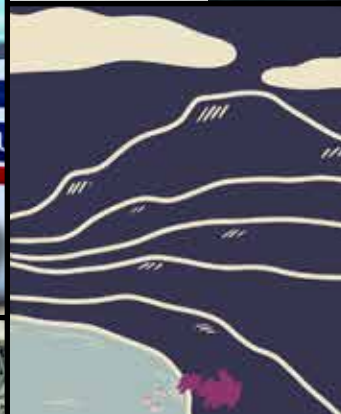
THOMPSON DIVIDE, CO
We have flown the Thompson Divide hundreds of times since 2005, resulting in cancellation of existing mineral leases and a proposed mineral withdrawal.

2005



2006

SAWTOOTH WILDERNESS, ID
These red, dead trees - evidence of pine beetles that thrive in a warming climate - are a striking visual cue for cockpit conversations about climate and the future of our Western forests.



BUTTE, MT
Berkeley Mine, a former open pit copper mine and ongoing SuperFund site.

2007



2008

CHACO CULTURE NATIONAL HISTORICAL PARK, NM
Threatened by oil and gas, Chaco is also a Dark Sky Park. A 2022 Congressional bill would preserve the Greater Chaco region permanently.





2011

STUDENT PROGRAMS

Kestrel and Flight Across America programs unite students with diverse backgrounds from across the West to learn and advocate for environmental change.



MOJAVE DESERT, NV

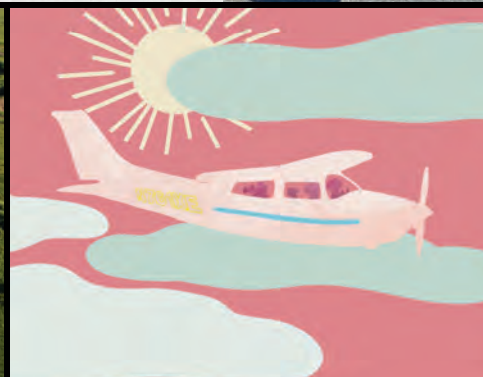
The Ivanpah concentrated solar thermal plant is one of the largest in the world, but controversial due to wildlife impacts and inefficiencies.

2012



2010

ECOFLIGHT OVER GREEN RIVER, WY
Photo by George Steinmetz



2013

WELD COUNTY, CO

Flooding inundated natural gas fields, spilling wastes and fracking fluids.



2014

SMOKY CANYON PHOSPHATE MINE, ID

Downstream waters contain harmful levels of selenium. Flight passengers included The Daily Show.



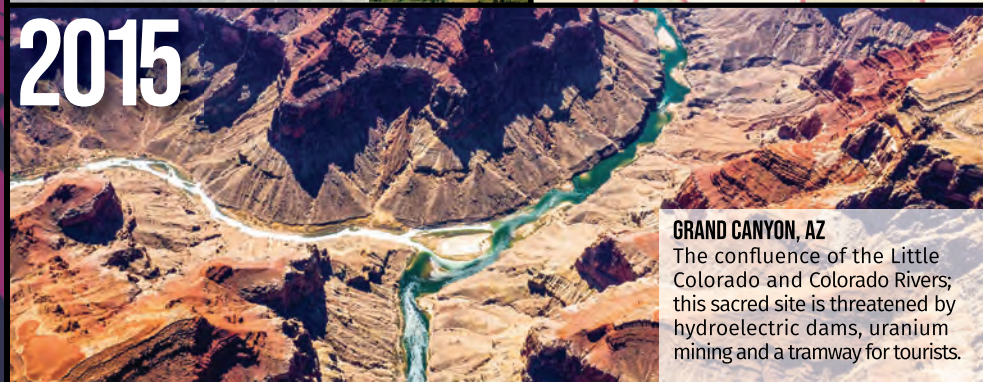
2015



2009

COLORADO RIVER DELTA, MEXICO

Aerial images show a Colorado River in crisis, sparking national concern.



GRAND CANYON, AZ

The confluence of the Little Colorado and Colorado Rivers; this sacred site is threatened by hydroelectric dams, uranium mining and a tramway for tourists.

LEMHI VALLEY, ID
Borah Peak WSA
in the High Divide
landscape.

2016

FARMINGTON, NM
The Four Corners Power Plant
and San Juan Generating
Station are two of the dirtiest
coal plants in the USA, and
are being decommissioned
starting in 2022.

2017



2018



SAN RAFAEL SWELL, UT
In a major victory for
conservation, "the Swell"
was protected in 2019 as
part of Dingell Natural
Resources Act.



2021

SAN GABRIEL MOUNTAINS, CA
Newhall Pass Interchange, a major
barrier for cougars and other wildlife.

GILA RIVER, NM
EcoFlight continues to advocate
with local communities and
conservation partners for
legislation to protect the
Gila as Wild and Scenic.

2020



COVID
EcoFlight delivered a
quarter million COVID
PPE to remote Tribal
communities.



2022

BULLFROG, AZ
Lake Powell's
boat ramps high
and dry, with
water levels
dipping to a
catastrophic
new low.



2019





A CELEBRATION OF 20 YEARS OF CONSERVATION AVIATION

To honor our dedicated supporters, we joined together for a night of dancing and delicious food to raise support for our next chapter of conservation flying. EcoFlight's work to protect public lands and wildlife habitat, increase water security, build climate resilience, and mitigate wildlife risk has never been more critical. Thank you to all who attended our Gala and to the EcoFlight family of supporters - you are the wind beneath our wings, enabling us to provide the aerial perspective and create a platform for progress!





EXTRACTIVE INDUSTRY



ORPHANED WELLS

Orphaned natural gas wells in the Four Corners region are unnoticeable from the ground. But these wells leak methane - a potent greenhouse gas. The exact number of orphaned wells, and their collective emissions, is unknown, but estimates are significant. Overflights are helping our partners identify the location of abandoned wells to help inform the BLM as they work on reclamation.

STIBNITE GOLD: HOW NOT TO RECLAIM A MINE

The Stibnite Gold Complex in the backcountry of Idaho is labeled as a reclaimed mine, but residents disagree. Nez Perce and Idahoans have committed millions of dollars to address the negative impacts of previous mining here. Thanks to their efforts, steady progress has been made in improving the water quality and habitat of streams that were contaminated. But a mining company has proposed reopening and expanding the mine, which would affect over 3,000 acres, massively disrupting the ecosystem and Tribal communities, and posing significant pollution risks. Flights help raise public awareness about the mine threats to the landscape, and wildlife, specifically salmon, steelhead and westslope cutthroat trout.

DOMESTICATING COBALT MINING

The Idaho Cobalt Belt is the largest cobalt deposit in the U.S., and the site of a new-school mine that hopes to prove that mining can be just and sustainable. Cobalt is essential for electric vehicle batteries and renewable energy wind turbines; however, 70% of this critical mineral is mined in the DRC (Congo) without ethical or environmental safeguards. The new Jervois Global operation in Idaho will fill around 10% of overall U.S. cobalt demand, bolster our economy and advance ethical mining practices. Our partners at ICL are collaborating with the operator to ensure this essential 21st century element is mined in a 21st century way, with the highest level of care to protect the environment.

RISKY BUSINESS: A BIRD'S EYE VIEW OF MINES' THREAT TO WATERSHEDS

British Columbia, known for its majestic coastal mountains and world-class recreation, also hosts some of North America's biggest open-pit mines. We flew NWF and media over the Copper Mountain Mine, which many fear poses serious risks to downstream watersheds, especially from two massive earthen tailings dams, holding millions of cubic feet of toxic water. Studies show the probability of failure of these dams to be as high as one in a hundred! Worse, the mine wants to expand the dams, making the second tallest tailings dam in the world at 853 feet high! At risk downstream are thousands of residents, the cultural homelands of the Okanagan First Nation, sensitive fish and wildlife habitat, and an important agricultural region. Flights provided a platform to sound the alarm.



THE SCALE OF MOUNTAINTOP REMOVAL: SEE IT TO BELIEVE IT

One of the largest open-pit mining operations in British Columbia is seeking to expand, despite existing concerns about drinking water and environmental pollution. The scale of the mining operations is mind blowing from the air - the largest open pit in the Elk Valley complex stretches over 12 miles across! Our partners, including NGOs and Tribal leaders, along with US governments, are seeking stronger regulations and increased oversight of BC mining operations that threaten US watersheds, important cultural landscapes, fish populations, and recreation.





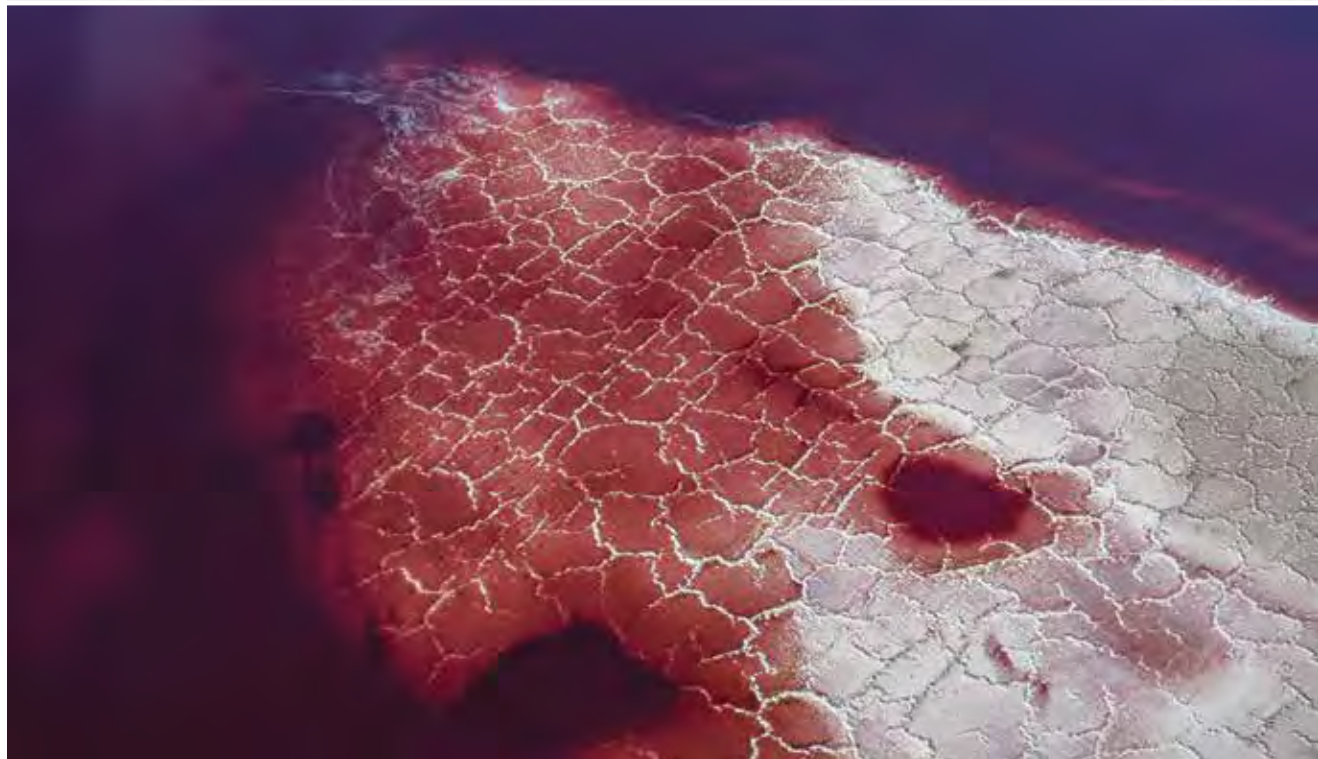
PRESCRIBED FIRE GONE WRONG

A prescribed fire out of control - the stuff of nightmares for communities in the arid west. The communities of Mora, NM, endured just that, when a “controlled” burn consumed 340,000 acres, tore through communities, and destroyed generations of artifacts, art and heirlooms of Northern New Mexico Latino culture. Locals had warned the USFS that conditions were too unpredictable for a prescribed burn, but the warnings were ignored. We flew filmmakers and local stakeholders to raise awareness of the challenges facing Mora communities and to assess the damage caused by the fire.



THE DWINDLING GREAT SALT LAKE

The Great Salt Lake covered 3,300 square miles in the late 1980s, but now covers only 1,000 square miles. Its red, murky waters support millions of migratory birds that feed on tiny brine shrimp, and the lake drives a 1.3 billion-dollar economy centered on recreation and extraction of salt and magnesium. However, as the climate warms and the lake dries, heavy metals and toxins that have accumulated on the lakebed are becoming exposed and windblown, threatening the health of 1 million residents in the greater Salt Lake City urban corridor. We flew ornithologists, scientists, conservationists and the press to bring this topic into mainstream media and encourage collaborative solutions.





CLIMATE RESILIENCY

BUSY BEAVERS BUILDING RESILIENT WATERSHEDS

Beavers are unlikely heroes in the fight against climate change. These industrious rodents were nearly wiped out a century ago by the fur trade, but are being reintroduced to help combat atmospheric carbon. Beaver dams sequester carbon in sediments and riparian vegetation. Ponds and wetlands create effective fire breaks and make the forest more resistant to drought and wildfire. We flew experts and media working on reintroduction efforts in the White River National Forest, allowing scientists to 'air truth' potential reintroduction sites that have been identified using GIS. These sites are remote and difficult to access without the aerial perspective.



DROUGHT AND FIRE IMPACTS IN THE LOWER TRINITY BASIN

Flights in the lower Trinity Basin looked at the carnage left in the wake of extreme drought and fire. After the 2021 fire season, a winter storm brought down deadfall at an unprecedented rate in the lower Trinity River basin. Roads, streams, and wildlife corridors became choked with downed trees. We provided an aerial perspective to inform remediation and generate media that will help other communities become better prepared for wildfire impacts.



CALIFORNIA'S MEGAFIRES AND TRADITIONAL KNOWLEDGE

The scale and intensity of wildfires continues to increase with climate change. As California and the West race to adapt, we flew initiatives in the Klamath Mountains that use Traditional Indigenous Knowledge and forest management techniques practiced for generations by our Karuk and Yurok Tribal partners to improve forests' ability to resist fire. Our flights educated fire scientists on these effective and efficient Traditional fire management tactics, and how prescribed fires are essential to managing the spread and intensity of forest fires.

KEEPING THE CRYSTAL WILD

The Crystal River is one of the last undammed, free-flowing rivers in Colorado. EcoFlight is an integral part of a grassroots coalition that has come together to advocate for protection of the Crystal River, to keep the river “just the way it is.” The coalition is proposing a Wild & Scenic designation. We fly key decision makers, press and undecided constituents to demonstrate the remarkable qualities of the Crystal, letting the spectacular watershed speak for itself, clarify misconceptions about Wild & Scenic, and provide the coalition with a platform to build relationships with local policymakers, and city and town representatives.



THE EEL RIVER AND NORTH COAST COAL TRAIN

The Eel is one of California’s major rivers, draining a rugged landscape. The Eel’s fragile salmon and steelhead populations are imperiled by drought, insufficient fish passage around its hydroelectric dams, and the threat to rebuild the North Coast coal train and use it to ship heavy loads of coal through the heart of the quiet watershed. We flew media to spread public awareness about threats to the Eel and captured spectacular photos of the turquoise river for press and partners’ campaigns. The flight also scoped the proposed route of the Great Redwoods Trail, which would replace the old railroad line, put an end to the threat it poses, and offer expanded opportunities for sustainable recreation and tourism.





PROGRESS ON THE CLARK FORK RECOVERY

One of the country's largest Superfund sites sits in the quaint Clark Fork Valley (MT). A massive flood in 1908 washed tons of mining waste into the Upper Clark Fork River, devastating the mining communities of Butte and Anaconda, and polluting 120 miles of verdant floodplains. Mine tailings, heavy with arsenic, cadmium, copper, zinc and lead, contaminated agricultural fields and drinking water. For over a decade, we have flown restoration of the Clark Fork with multiple partners, including the Confederated Salish and Kootenai Tribes and Clark Fork Coalition.

AN ISLAND OF WATER IN THE DESERT

The Amargosa Basin more closely resembles Mars than Eastern California. Yet the Amargosa River Basin provides vital habitat connectivity between Death Valley National Park and Mojave National Preserve and supports rare and endemic species including the endangered Amargosa vole! This tiny mammal occupies a range of only five square miles, making it the most endangered mammal in the country. The Basin is also home to historic footpaths of the Shoshone and Paiute and wagon routes of the Mormon Trail. Flights informed passengers of new mining developments that threaten this delicate landscape.



THE TETON - A FREE FLOWING RIVER

Our overflights of the Teton River Canyon examined this ecologically valuable landscape, highlighting the river's unique and free-flowing beauty. Our partners at Friends of the Teton River and American Rivers are working to preserve the Teton Canyon under a Wild & Scenic designation, which will protect the river's free-flowing nature from future dams and threats.

STUDENT FLIGHTS - CONSERVATION LEADERS OF TOMORROW

EcoFlight is bringing the aerial perspective to the next generation of conservation advocates! Through flight, students develop a sense of place, and a realization and improved understanding of the way that humans interact with and impact ecosystems around us. This year, we provided 130 students with our awe-inspiring and empowering conservation perspective.

"Every little building looked like a miniature model that you would find on a train set. You could see the damage climate change has brought to the planet, and our very own county. I hope that more people get to experience this and that they will also realize the effects of climate change." - Aspen Youth Center Student



RENEWABLE ENERGY

CLEAN ENERGY TRADEOFFS

The Lava Ridge Wind project, northeast of Twin Falls in Idaho's Magic Valley, could provide enough clean electricity to power 300,000 homes. However, it would impact wildlife (including threatened sage grouse) and the remote settlement at Minidoka National Historic Site where 13,000 Japanese-Americans were imprisoned during WWII. Friends of Minidoka, a non-profit that supports the experience of those incarcerated, opposes the project. We convened clean-energy supporters, the press, and Friends of Minidoka affiliates to build understanding between competing viewpoints.

ECO-FRIENDLY LITHIUM EXTRACTION AT THE SALTON SEA

The geothermal brine beneath the Salton Sea is one of the largest lithium stores in the world. Plus, it can be extracted sustainably, thanks to new technology. Lithium is essential for electric vehicles and the power grid, but accessing it has usually required massive open-pit mines that cause irreparable environmental damage. Flights with Audubon, National Parks Conservation Association and General Motors highlighted the potential of the Salton Sea's lithium stores, as well as the importance of the Sea's wildlife habitat while addressing the severe pollution crisis.





TESTIMONIALS



AMANDA PODMORE, GRAND CANYON TRUST

I am writing with such deep gratitude and appreciation for all you did last week to host a successful and deeply meaningful event in Tusayan for young Native folks of the region...thank you for your ongoing commitment to helping leaders and future leaders experience the Little Colorado River and Grand Canyon from the air!

Dear Jane and Bruce:

I write to extend my gratitude for hosting the flyover with Commissioner Touton and Deputy Secretary Beaudreau... [It was] an excellent way to highlight the challenges we face on the Colorado River. I have long-valued EcoFlight's ability to showcase the interconnections of our environment at the landscape-scale, and the flyover last week again demonstrated how valuable it can be to have an aerial perspective. Your experience hosting these flyovers - from the skill of your pilots to the close collaboration of your staff with my office - made the flyover a highly enjoyable experience for everyone involved.

My sincere thanks for making the flyover possible and for your continued work on behalf of conservation in the West.

*Sincerely,
Michael F. Bennet
United States Senator*

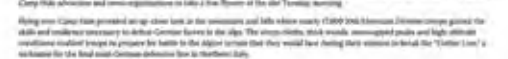


LAURA PRITCHETT, AUTHOR AND JOURNALIST

As we flew above the area — or floated, because that's what it felt like — I could clearly see how the bike and hiking paths (lovely in their own way) gave way to unbroken landscape (also lovely in a different way), and that seemed like a good thing. Something about flying helps you see the landscape as a whole, rather than its various designations or boundaries, and the wholeness seems capital-G good.



The whole thing and being by those two eye-opening to me. Seeing by one from a different view was more painful and I was a different person than one who opens their eyes to that, and I realize, at the moment, after a short but long time, seeing that in the one message (I cannot say that) I felt from the most intense. "Being of it all" was a different way of looking about the more than that. It is the message. We actually got to see of the different kinds that flow into the Crystal and how well it is and how important it is to protect.





TAKE ACTION, GET INVOLVED!

What makes an airplane fly, is it power or thrust or pressure differential, lift or wingspan? All of the above, but most importantly, it is your dollars that fill the gas tank, and enable EcoFlight to achieve **LIFT OFF!**

Become a member of EcoFlight, and fly high with us as we fly proactively to create positive and rational change. Your gift to EcoFlight helps ensure a future for America's wild lands by providing the big picture perspective.

***We invite you to get involved
in the following ways:***



DOUBLE YOUR IMPACT

Check to see if your company has a matching gift program to double, or even triple, your support

Contact Jane Pargiter:
jane@ecoflight.org

SCAN AND
DONATE
NOW



DONATE



GIVE ONLINE

Start making a difference for our wild lands in the West right away, by making your gift online.

It's easy and secure.
<https://ecoflight.org/donate/>

GIVE APPRECIATED SECURITIES

Consider using your assets – from stocks and bonds to mutual funds – to protect America's wild lands.

Contact Jane Pargiter:
jane@ecoflight.org



LEAVE A LEGACY

Give a gift for future generations: include EcoFlight in your will or other estate plans so that our wild lands and wildlife will be protected long into the future.

Contact Jane Pargiter:
jane@ecoflight.org



STAY CONNECTED

Sign up to receive our monthly Captain's Blog and biannual newsletter, to be a more informed member of a special community helping to conserve America's magnificent wild lands and wildlife.

Contact Amanda Grimsted:
amanda@ecoflight.org

PARTNERS/STAFF/BOARD

STAFF:

Bruce Gordon:
Founder

Jane Pargiter:
Executive Director

Rachael Bazley:
Graphic Designer

Amanda Grimsted:
Communications Director

Ben Hunter:
Director of Multimedia

Gary Kraft:
Pilot

Lea Linse:
Program Coordinator

Dave Polovin:
Bookkeeper

BOARD:

Mark Harvey
Skip Behrhorst
Deon Ben
Heidi Bintz
Bert Fingerhut
Bruce Gordon
Andrea Grant
Bill Hedden
Pete McBride
Jane Pargiter
Ronald Sievert

ADVISORY BOARD:

David Bonderman

2022 PARTNERS

29 Palms Band of Mission Indians

ABC Idaho News 6

Adams State University

Alamosa Citizen

Alianza Coachella Valley

Amargosa Conservancy

American Indian Institute

American Rivers

American Whitewater

Anchor Ranch

Applied Geomorphology Inc.

Arizona Daily Sun

Arizona Mining Reform Coalition

Arizona Republic

Aspen Daily News

Aspen Journalism

Aspen Public Radio

Aspen Times

Aspen Youth Center

CA Assemblymember Eduardo Garcia

CA Assemblymember Jim Cooper

Audubon Society

Backbone Media

Backcountry Hunters & Anglers

Basin and Range Watch

Bay Area News

Boulder City, NV

Bears Ears Partnership

Bears Ears Inter-Tribal Coalition

Blackfeet Nation Fish and Wildlife Department

Bogus Basin

Boise State Public Radio

Bowhunters of Wyoming

Bozeman Daily Chronicle

Brundage Mountain Resort

Buddy Program

Buffalo Song

Butte County, CA

Cactus to Cloud

CalMatters

California Botanic Garden

California Department of Finance

California Energy Commission

California Labor and Workforce Development Agency

California Natural Resources Agency

California Wilderness Coalition

Cayuse Livestock Company

Center for Biological Diversity

Citizens Nuclear Information Center

City of Craig, CO

City of Grand Junction, CO

City of Livingston, MT

City of Santa Clarita, CA

Clark County, NV

Clark Fork Coalition

Climate Action Campaign

Coal Ridge High School, CO

Colorado Canyon Association

Coleville Confederated Tribes

Colorado Headwaters

Colorado Mountain College

Colorado Natural Heritage Program

Colorado Parks and Wildlife

Colorado Plateau Foundation

Colorado Public Radio

Colorado River Indian Tribes

Colorado River Water Conservation District

Colorado Rocky Mountain School

Colorado Sun

Colorado University

Colorado Water Conservation Board

Colorado Wildlands Project

Colville Confederated Tribes

Comite Civico Del Valle

Conejos County, CO

Confederated Salish and Kootenai Tribes

Congressman Jared Huffman

Congressman Raul Ruiz

Congresswoman Sara Jacobs

Consejo de Federaciones Mexicanas en Norteamérica

Conservation Alliance

Conservation Lands Foundation

Conservation Northwest

Crazy Mountain Access Project

Crystal River Caucus

Crystal Valley Echo

Crystal Valley Environmental Protection Association

Cuts Wood School, MT

Daily Montana

Dan Bailey's Outdoor Co

Darco Productions

DCTV

Defenders of Wildlife

Denver Post

Deseret News

Desert Interfaith Council

Desert Sun

Desert Tortoise Preserve Committee

Drowers Journal

Eagle County, CO

Eagle Valley High School, CO

Aspen Skiing Company Environment Foundation

Explore Big Sky

Fire Forward program, Audubon Canyon Ranch

Flathead Beacon

Formation Environmental, LLC

Fort McDermitt Paiute and Shoshone Tribe

Fort Mojave Indian Tribe

Fox 13 Utah

Fred Phillips Consulting

Friend of Plumas Wilderness

Friends of Cedar Mesa

Friends of Great Salt Lake

Friends of Makoshika

Friends of Minidoka

Friends of Nevada Wilderness

Friends of Plumas Wilderness

Friends of the Eel River

Friends of the Inyo

Friends of the Owyhee

Friends of the Teton River

Friends of the Yampa

General Motors

Glacier Two Medicine Alliance

Glen Canyon Institute

Glenwood Springs Citizens Alliance

Glenwood Springs Post Independent

Gooding County, ID

Governor Mark Gordon, State of Wyoming

Grand Canyon Trust

Grand County, UT

Grand Junction Daily Sentinel

Grand Staircase-Escalante Partners

Granite Peak Communication

Great Falls Tribune

Great Old Broads for Wilderness

Great Salt Lake Collaborative

Great Salt Lake Institute

Greater Yellowstone Coalition

Gulch Magazine

Gunnison County, CO

Gunnison County Times

Gunnison Public Lands Initiative

Havasupai Tribe

Herald and News

High Country Conservation Advocates

High Country News

Hispanic Access Foundation

Hopi Cultural Preservation Office

Hopi Tribe

Howell Conservation Fund

Humboldt Area Foundation

Humboldt County, CA

Hunter Creek Historical Foundation

Idaho Capital Sun

Idaho Conservation League

Idaho Department of Fish and Game

Idaho News 6

Idaho Prescribed Fire Council

Idaho Press

Idaho Rivers United

Mariana Davis, Idaho State Legislature

Idaho Wildlife Federation

Idaho World

linnii Initiative

Imperial County, CA

Imperial Irrigation District

Imperial Valley College, CA

In Our Nature Guiding Services

Independence Pass Foundation

International Joint Commission

Inyo Planning Commission

Jerome County, ID

Kalispel Tribe

Karuk Tribe

KCBS Radio
KDNK Radio
Keep Long Valley Green
Keeping Track (Susan Morse)
Klamath River Renewal Corporation
KMVT TV
KOED Media
KRTV TV
KSJD Radio
KUER Radio
KUNC Radio
KZMU Radio
KZYX Radio
LA Times
Lake County, CA
Lakes Commission
Las Vegas Sun
Latino Outdoors
Lewis-Clark Terminal
Lewistown News-Argus
Lili Media
Lincoln County
Living Rivers
Livingston Enterprise
Lost Coast Outpost
Lower Trinity River Prescribed Burn
Association
Man-Dak Construction Supplies
Marjorie Barrick Museum of Art
Matter Strategies
May Valley Farm
Meagher County Stewardship Council
Melvin Consulting Hopi Tribe
Mesa County, CO
Mid Klamath Watershed Council
Missoula County, MT
Missoulain
Moffat County, CO
Mojave Desert Land Trust
Molino de la Isla Organics/NM Acequia
Commission
Monica Sandoval
Mono Lake Tribe
Montana Audubon
Montana Free Press
Montana Freshwater Partners
Montana Public Radio
Montana Standard
Montana Trout Unlimited
Montana Wildlife Federation
Mora County, NM
Mora Is Burning
Mora School Board
Mountain Philanthropies
Mountain Rescue, Aspen
Moxier Cran Media
Mule Deer Foundation
Muley Fanatic Foundation
Napa Valley Register
National Geographic
National Park Service

National Parks Conservation Association
National Wildlife Federation
Native American Land Conservancy
Navajo Nation
Nevada Conservation League
Nevada Department of Wildlife
Nevade Conservation League
New York Times
Nez Perce Tribal Executive Council
Nez Perce Tribe
North Coast Environmental Center
North Coast Journal
North Platte Basin Roundtable
Oljato - Navajo Nation Chapter
onX
Oregon Public Radio
Our Montana
Outside
Pacific Forest Trust
Pacific Northwest Farmers Cooperative
Pahrump Valley Times
Pamma Band of Luiseno Indians
Park County, MT
Park County Community Foundation
Park County Environmental Council
Partner Engineering
PELA, GeoEnvironmental, Inc
Piikani Lodge Health Institute
Pitkin County, CO
Pitkin County Healthy Rivers
Politico CA
Post Independent
Powell County, Montana
Press Democrat
Priest Community Forest Connection
Progressive Leadership Alliance of
Nevada
ProPublica
Protect Thacker Pass
Ranger Review
Rep. Dina Titus
Rep. Joel Briscoe
Rep. Juan Vargas
Rep. Mike Garcia
Rep. Mike Simpson
Rep. Raul Ruiz
Rep. Scott Peters
Rep. Susie Lee
Resource Environmental Solutions
Rio Grande Water Conservation District
Rifle High School. CO
Rig to Flip
Ringo Chiu
Roaring Fork Conservancy
Roaring Fork High School, CO
Rocky Mountain Bighorn Society
Rocky Mountain Elk Foundation
Rocky Mountain Wild
Rogers Art Loft
Ruedi Water and Power Authority
Sagebrush Habitat Conservation Fund

Sakura Conservation Strategies
Salazar Rio Grande del Norte Center
Salt Lake Tribune
San Francisco Chronicle
San Juan Citizens Alliance
San Luis Valley Irrigation District
Saratoga Encampment Rawlins
Conservation District
Saratoga Sun
Save the Confluence
Save the South Fork Salmon
Seattle Times
Selkirk Conservation Alliance
Sen. Dahle
Sen. Hickenlooper Staff
Sen. Diane Feinstein
Sen. John Hickenlooper
Sen. Michael Bennet
Sen. Alex Padilla
Sheridan Community Land Trust
Sho-pai Tribes
Shodair Children's Hospital
Sierra Club
Sierra Nevada Conservancy
Sims Wood Logging
SJV Water
Sky Hook Solar Corp
Smartwool
Smithsonian
Southern Utah Wilderness Alliance
Steamboat Pilot & Today
Stop the Wild Horse Roundups Coalition
Swan Valley Connections
Sweetwater County, WY
Telemundo
The Access Fund
The American Indian Center
The Aspen Times
The Chaparral Lands Conservancy
The Denver Post
The Desert Sun
The Guardian
The Journal
The Narwhal
The Nature Conservancy
The New York Times
The North Face
The Seattle Times
The Spokesman Review
The Star News
The Watershed Center
The Wilderness Society
Theodore Roosevelt Conservation
Partnership
Times-News
To Nizhoni Aniup
Town of Carbondale, CO
Town of Hayden, CO
Town of Marble, CO
Transition Habitat Conservancy
Trinity County, CA
Trinity County Resource Conservation
District

Trinity Public Utilities District
Trinity River Lumber Company
Trout Unlimited
Tsnungwe Tribe
Tuleyome
Two Rivers Tribune
U.S. Fish & Wildlife Service
U.S. Forest Service
U.S. Department of the Interior
U.S. Geological Survey
United Food and Commercial Workers
University of California
University of California Cooperative
Extension
University of Colorado Law Clinic
University of Montana
University of Montana Flathead Lake
Bio Station
University of Nevada
Upper Snake River Tribe
Upper Yampa Water Conservancy
District
Utah Dine Bikeyah
Utah Division of Wildlife Resources
Utah Public Radio
Utah State University
Ute Mountain Ute Tribe
Ute Indian Tribe
Vail Daily
Velez Farms
Verde Brand Communications
Vet Voice Foundation
Volcan Mountain Foundation
Walker Fund
Walking Shadow Ecology Tours
Water and Tribes Initiative
Western Colorado Climbers' Coalition
Western Colorado University
Western Environmental Law Center
Western River Conservancy
Western Slope Conservation Center
Western Watersheds Project
Westmorland Union Elementary
School,
CA
White Mesa Concerned Community
Wild & Scenic Citizens Committee
Wild Connections
Wild Montana
Wilderness Workshop
Willow Creek Community Services
District
Wind River Native Advocacy Center
Winter Wildlands Alliance
Wyoming Game & Fish Department
Wyoming Stock Growers Association
Wyoming Wildlife Federation
Yampa Valley Community Foundation
Yellowstone to Yukon Conservation
Initiative
Yellowstone Public Radio
Yurok Tribe



Eco Flight



ecoflight1



ecoflight



EcoFlightVideo

EcoFlight . 307 L AABC . Aspen, CO 81611 . 970-429-1110 . EcoFlight.org